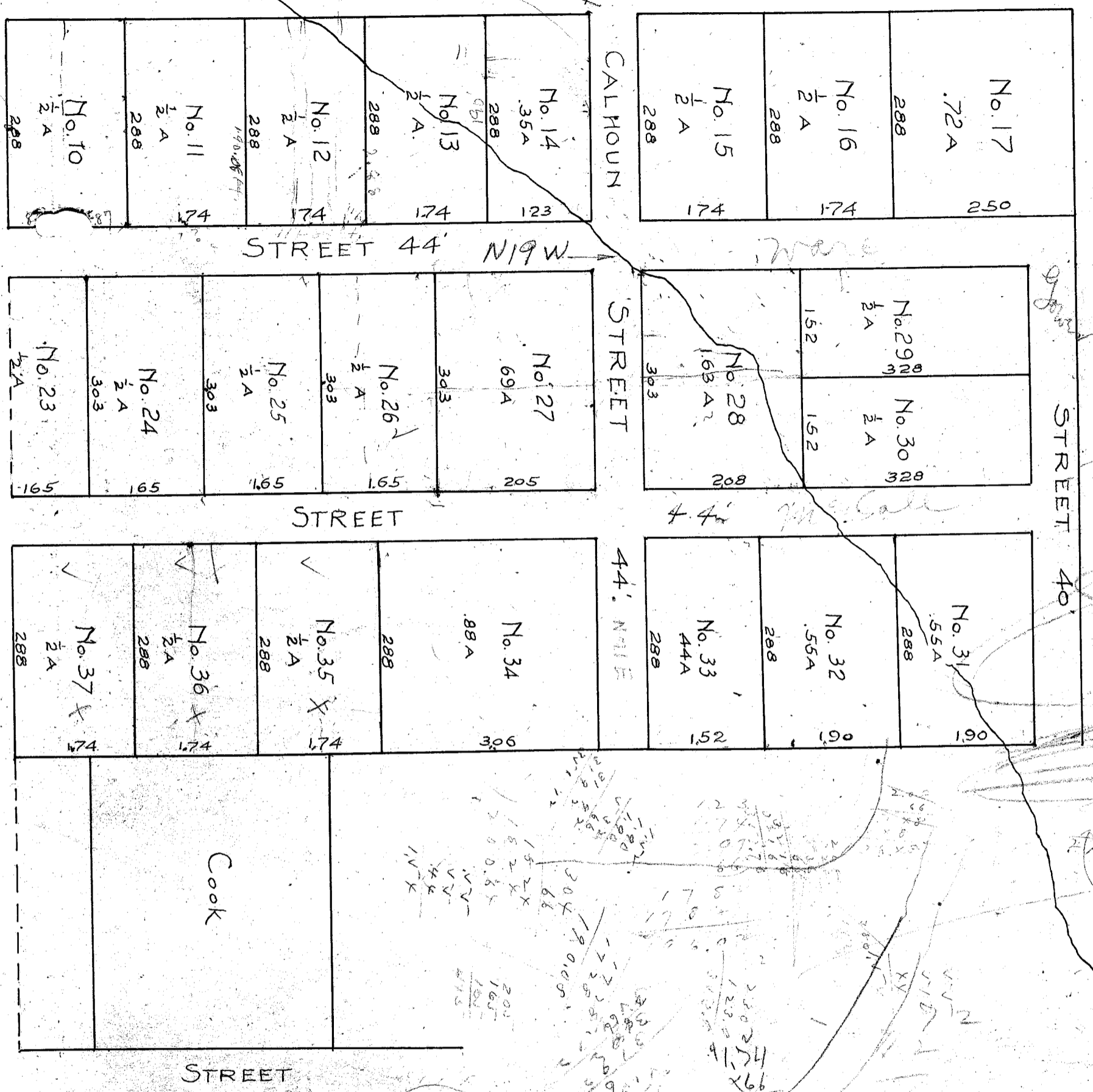


Handwritten notes:

- 1700*, *60*, *1044*, *13.3*, *1.66*
- 66*, *3.3*, *178*, *178*, *217.5*, *103.9*
- 171.26*, *114.84*, *56.42*, *171.26*, *421*
- 2.27*, *66*, *1362*, *1362*, *149.82*
- 1165* *
- 66*
- 1990*
- 1990*
- 1088*
- 3.66*
- 23.16*
- 231.64*
- 234.190*
- 66*
- 1120*
- 1100*
- 1100*
- 1100*
- 125.4*
- 125.4*
- 100.3*
- 57.1*
- 44*
- 254.7*
- 649.8*
- 123*
- 77.98*
- 73.8*
- 81.18*
- 46*
- 36*
- Scale of 10/6 or 1-2/3 Chs. Per Inch.*
- To reduce chains to feet, multiply by 66.*
- PLAT OF LANDS ESTATE OF T.E.WARE,*
- GREENVILLE.S.C.*
- Made by J.N. Southern.*
- Recorded August 14th, 1908,*
- and Platted by J.B.--*
- 12.5*
- 81*
- 44*
- 174*
- 66*
- 1944*
- 1044*
- 1108.4*
- 174*
- 66*
- 1944*
- 1044*
- 1108.4*



Handwritten notes:

- 1700*, *60*, *1044*, *13.3*, *1.66*
- 66*, *3.3*, *178*, *178*, *217.5*, *103.9*
- 171.26*, *114.84*, *56.42*, *171.26*, *421*
- 2.27*, *66*, *1362*, *1362*, *149.82*
- 1165* *
- 66*
- 1990*
- 1990*
- 1088*
- 3.66*
- 23.16*
- 231.64*
- 234.190*
- 66*
- 1120*
- 1100*
- 1100*
- 1100*
- 125.4*
- 125.4*
- 100.3*
- 57.1*
- 44*
- 254.7*
- 649.8*
- 123*
- 77.98*
- 73.8*
- 81.18*
- 46*
- 36*
- Scale of 10/6 or 1-2/3 Chs. Per Inch.*
- To reduce chains to feet, multiply by 66.*
- PLAT OF LANDS ESTATE OF T.E.WARE,*
- GREENVILLE.S.C.*
- Made by J.N. Southern.*
- Recorded August 14th, 1908,*
- and Platted by J.B.--*
- 12.5*
- 81*
- 44*
- 174*
- 66*
- 1944*
- 1044*
- 1108.4*
- 174*
- 66*
- 1944*
- 1044*
- 1108.4*